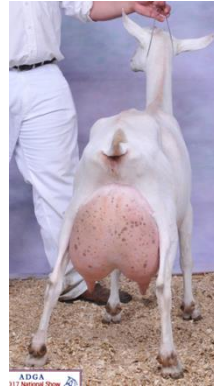


***B Springfield Oaks SSEM Norfolk**

Sire's Dam: SGCH Spinning Spider EL Heat Wave 4*M



5-04 92(EEEE) 2-11 326 5210 3.2% fat
Total Performer 2021 Natl Show

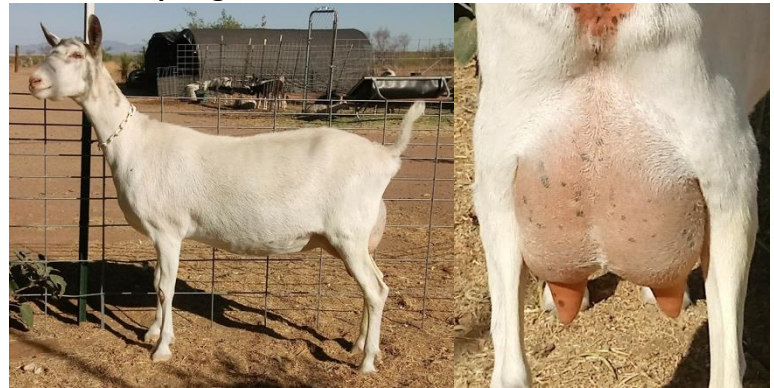
PATERNAL SISTERS:

GCH (pend) Springfield Oaks SSEM Laura 20*M



2-02 90(VEEE) 4xBOB, 2xBIS
1-00 319 2230 4.5% fat, 3.2% protein
2-00 100 1066 4.3% fat, 3.1% protein, i.p.

Springfield Oaks SSEM Malinda



3x 1st, 3x 2nd as yearling milker
1-02 87(+VVV)
1-00 103 712 2.5% fat, 2.7% protein, i.p.

DAM

Springfield Oaks JK Katya 14*M



2 GCH legs 1-05 89(VEEE) 3-01 91(VEEE)
1-10 321 2119 3.4% fat, 2.8% protein
2-10 117 1103 3.5% fat, 2.5% protein, i.p.

Maternal sister, Melba, sired by Laura's twin



1-02 87(VVVV) 2x 1st, 3x 2nd, 1x3rd
1-00 126 728 2.8% fat, 2.9% protein, i.p.

***B Springfield Oaks SSEM Norfolk AS2161073**

DOB: 3/14/21 SFO/N10

SSS: SG +*B Des Ruhigestelle Trademark
4-03 91(EEE) PTI: 44,-18 DauAvg: FS:87, 3172

SS: *B Tempo Passa Etain
PTI: 26, -28 Dau. Avg: FS84, 2422

S: *B Spinning Spider EH Easy Money
1-06 86(+VE) ETA: 82,91

SDD: SGCH Tempo Passa Etienne 10*M
5-06 92(EEEE) PTI: 85,97
Dam of 2021 NS GCH, SGCH Tempo Passa Etoilee

SDS: SG +*B Des Ruhigestelle Elander
PTI: 133, 121 DauAvg: FS88, 3367

SD: SGCH Spinning Spider EL Heat Wave 4*M
5-04 92(EEEE) PTI: 228,290
2-11 326 5210 3.2% fat
Total Performer 2021 NatlShow

SDD: SGCH Spinning Spider AV Changes 3*M
6-02 92(EEEE) PTI: 106,270
3-04 286 2960 2.5% fat

DSS: GCH +*B Jug Tavern's Captain Nemo
3-04 91(VEE) ETA: -83, 36 DauAvg FS88

DS: CH *B Springfield Oaks JTCN Jackson
2-06 92(EEE), 5XBOB, 3XBIS

DSD: SGCH Springfield Oaks CG Fortune 14*M
6-01 92(EEEE) PTI:57,55
1-11 320 3630 4.8% fat

D: Springfield Oaks JK Katya 14*M
2 GCH legs PTI: -26, 68 3-01 91(VEEE)
2-10 117 1103 3.5% fat i.p.

DDS: GCH +*B Springfield Oaks D Cortez
5-03 92(EEE) PTI:-39,21 DauAvg: FS88, 2459

DD: GCH Springfield Oaks Cortez Dawn 13*M
5-06 91(EEEE) PTI: -23, 70
4-01 314 3080 3.6% fat

DDD: Springfield Oaks Doc's Cameo 12*M
PTA: -68, 17 broken leg, not appraised
0-11 384 1830 3.7% fat